



Personal Health Record Management System
for U3 USB Smart Drive.

CALPHR[USB]TM

Installation Guide

Personal Health Record Management System for U3 USB Smart Drives

CALPHR[USB]TM Installation Guide (1.0)



© 2002-2008 CAL2CAL Corporation
2182 Dupont Drive • Suite 213
Irvine, CA 92612, USA
www.cal2cal.com

Users must carefully read and accept End User License Agreement before using the product.

TABLE OF CONTENTS

1.	END USER LICENSE AGREEMENT	3
2.	OVERVIEW	8
3.	HOW TO USE THIS GUIDE.....	10
4.	INSTALLATION.....	11
	4.1. MINIMUM SYSTEM REQUIREMENTS	11
	4.2. PRE-REQUISITES / DEPENDENCIES	12
	4.3. INSTALLATION OF CALPHR[USB] TM ON U3 SMART DRIVE.....	13
5.	UN-INSTALLATION OF CALPHR[USB]TM FROM U3 SMART DRIVE.....	16
6	SUPPORT	18

1. End User License Agreement

This End-User License Agreement ("EULA") is a legal agreement between you, being an individual or a single corporate entity ("you") and CAL2CAL Corporation, USA and its subsidiaries, employees, directors and heirs ("CAL2CAL") for the **CALPHR[USB][™]** Beta software, and accompanying software code, documentation and other related material ("Software"). CAL2CAL may also provide, at various times, further updates to **CALPHR[USB][™]** Beta software, software code, documentation or other related materials. All such updates provided at any time will be considered part of Software for the purposes of this EULA and will be governed by the provisions of this EULA.

PLEASE READ THIS AGREEMENT CAREFULLY. BY USING, COPYING OR DISTRIBUTING ALL OR ANY PORTION THE SOFTWARE YOU ACCEPT ALL THE TERMS AND CONDITIONS OF THIS AGREEMENT. YOU AGREE THAT THIS AGREEMENT IS ENFORCEABLE LIKE ANY WRITTEN NEGOTIATED AGREEMENT SIGNED BY YOU. THIS AGREEMENT IS ENFORCEABLE AGAINST YOU AND ANY LEGAL ENTITY THAT OBTAINED THE SOFTWARE AND ON WHOSE BEHALF IT IS USED. IF YOU DO NOT AGREE, DO NOT USE THIS SOFTWARE.

CAL2CAL owns all intellectual property in the Software. The Software is protected by copyright laws and international copyright treaties, as well as other intellectual property laws and treaties. The Software is licensed, not sold. CAL2CAL permits you to use the Software only in accordance with the terms of this EULA.

- 1) GRANT OF LICENSE AND TERMINATION: This EULA grants you the following rights:
 - a) Software: You are permitted to install one copy of the Software on a single compatible device.
 - b) Documentation: You may print and make copies of the documentation for personal use only.
 - c) You cannot make copies of Software.
 - d) Termination: Without prejudice to any other rights, CAL2CAL may terminate this EULA if you fail to comply with the terms and conditions of this EULA. In such an event, you must uninstall and destroy all copies of the Software and related files and documentation.
 - e) You may terminate this Agreement at any time by permanently deleting, destroying, and returning, at your own costs, the Software, and all related materials provided by CAL2CAL. Your end-user rights automatically and immediately terminate without notice from CAL2CAL if you fail to comply

with any provision of this Agreement. In such an event, you must immediately delete, destroy, or return at your own cost, the Software, and all related material to CAL2CAL.

2) **LIMITATIONS AND USAGE:** The Software can only be used by individuals for personal, informational and non-commercial purposes only and is not intended to provide specific, healthcare or related advice. The Software is work-in-progress Beta and has not been tested under all conditions and may not be at the level of performance expected of a commercially released and available software product. CAL2CAL provides no assurance that the Software is bug-free or that it will perform in a stable manner. The Software is provided to you to use and test the Software and provide feedback to CAL2CAL in an effort to remove all bugs and improve Software. You acknowledge that no compensation of any kind is payable to you by CAL2CAL and that all feedback will be provided voluntarily.

You may not modify, adapt, translate or create derivative works based upon the Software. You may not reverse engineer, decompile, disassemble or otherwise attempt to discover the source code of the Software. You may not copy, distribute, copy, beam, loan or give away the Software or associated files and documentation.

3) **TERM OF EULA:** This EULA will commence immediately upon your accepting the Software and installing it on compatible device and will continue till such time as its not terminated by occurrence of one of the events below:

- a) Release of commercial version of **CALPHR[USB]TM** or successor product
- b) Discontinuance of the Software
- c) Termination by CAL2CAL under Clause 1d
- d) Terminated by you under Clause 1e

Upon termination of this EULA you must uninstall and destroy all copies of the Software and related files and documentation.

4) **COPYRIGHT and TRADEMARKS:** All title and copyrights in and to the Software (including but not limited to any code, documentation, images, text or data) are owned by CAL2CAL and its licensors. The Software is protected by international copyright laws and treaties; as well as other international intellectual property laws and treaties. Any unauthorized modification, reproduction or reverse engineering of the Software is forbidden.

5) **INDEMNIFICATION, SUPPORT AND WARRANTY:** You agree to release and to indemnify CAL2CAL, its heirs or its affiliated companies, their



trustees, directors, employees, professional staff or agents from any and all claims and damages in any way arising from the use of the Software by you, or any other individual or entity obtaining access to the Software from you.

The Software is being delivered to you "AS IS" and CAL2CAL makes no warranty as to its use or performance. CAL2CAL AND ITS LICENSORS DO NOT AND CANNOT WARRANT THE PERFORMANCE OR RESULTS YOU MAY OBTAIN BY USING THE SOFTWARE. EXCEPT FOR ANY WARRANTY, CONDITION, REPRESENTATION OR TERM TO THE EXTENT TO WHICH THE SAME CANNOT OR MAY NOT BE EXCLUDED OR LIMITED BY LAW APPLICABLE TO YOU IN YOUR JURISDICTION, CAL2CAL AND ITS LICENSORS MAKE NO WARRANTIES CONDITIONS, REPRESENTATIONS, OR TERMS (EXPRESS OR IMPLIED WHETHER BY STATUTE, COMMON LAW, CUSTOM, USAGE OR OTHERWISE) AS TO ANY MATTER INCLUDING WITHOUT LIMITATION NONINFRINGEMENT OF THIRD PARTY RIGHTS, MERCHANTABILITY, INTEGRATION, SATISFACTORY QUALITY, OR FITNESS FOR ANY PARTICULAR PURPOSE. The provisions of Section 5 and Section 6 shall survive the termination of this Agreement, howsoever caused, but this shall not imply or create any continued right to use the Software after termination of this Agreement.

6) LIMITATION OF LIABILITY:

THE SOFTWARE DOES NOT PROVIDE MEDICAL ADVICE.

The Software is not intended to be a substitute for professional medical advice, diagnosis, or treatment. CAL2CAL does not recommend or endorse any specific tests, physicians, products, procedures, opinions, or other information. Reliance on any information provided by the Software is solely at your own risk.

LIABILITY OF CAL2CAL AND ITS LICENSORS.

The Software is provided on an "AS-IS" basis. **CAL2CAL AND ITS LICENSORS TO THE FULLEST EXTENT PERMITTED BY LAW, DISCLAIM ALL WARRANTIES, EITHER EXPRESS OR IMPLIED, STATUTORY OR OTHERWISE, INCLUDING BUT NOT LIMITED TO THE IMPLIED WARRANTIES OF MERCHANTABILITY, NON-INFRINGEMENT OF THIRD PARTIES' RIGHTS, AND FITNESS FOR PARTICULAR PURPOSE.** Without limiting the foregoing, CAL2CAL and its licensors make no representations or warranties about the following:

1. The accuracy, reliability, completeness or timeliness of the Software or any information accessed using the Software.
2. The satisfaction of any government regulations requiring disclosure or non-disclosure of information provided by the Software.

IN NO EVENT WILL CAL2CAL OR ITS LICENSORS BE LIABLE FOR ANY DIRECT, CONSEQUENTIAL, INCIDENTAL, INDIRECT, SPECIAL, EXEMPLARY, EXTRAORDINARY OR PUNITIVE DAMAGES WHATSOEVER (INCLUDING WITHOUT LIMITATION, DAMAGES FOR LOSS OF PROFITS, LOSS OF USE, BUSINESS INTERRUPTION, LOSS OF DATA OR OTHER PECUNIARY LOSS), IN CONNECTION WITH OR ARISING OUT OF THE FURNISHING, PERFORMANCE OR USE OF THE SOFTWARE, WHETHER BASED UPON CONTRACT, TORT OR ANY OTHER LEGAL THEORY, INCLUDING NEGLIGENCE, EVEN IF CAL2CAL OR ITS LICENSORS HAVE BEEN ADVISED OF THE POSSIBILITY OF SUCH DAMAGES. THIS LIMITATION SHALL APPLY NOT WITHSTANDING ANY FAILURE OF THE ESSENTIAL PURPOSE OF ANY LIMITED REMEDY PROVIDED HEREIN. CAL2CAL is not liable for any personal injury, including death, caused by your use or misuse of the Software. Any claims arising in connection with your use of the Software must be brought within one (1) year of the date of the event giving rise to such action occurred. Remedies under these Terms and Conditions are exclusive and are limited to those expressly provided for in these Terms and Conditions. Some states or jurisdictions do not allow the exclusion or limitation of incidental, consequential or special damages, so the above exclusions and limitations may not apply to you.

7) MISCELLANEOUS: This Agreement will be governed by the laws of the State of California, and not by the U.N. Convention on Contracts for the International Sale of Goods which application is hereby expressly rejected. This Agreement contains the complete agreement between the parties with respect to the subject matter hereof, and supersedes all prior or contemporaneous agreements or understandings, whether oral or written. This Agreement may only be modified by a written amendment (executed by you and CAL2CAL) referencing this Agreement. No Failure to prosecute a party's rights with respect to a default hereunder will constitute a waiver of the right to enforce rights with respect to the same or any other breach. If any term or provision of this Agreement is found by a court of competent jurisdiction to be invalid, illegal or otherwise unenforceable, the same shall not affect the other terms or provisions hereof or the whole of this Agreement, but such term or provision shall be deemed modified to the extent necessary in the court's opinion to render such term or provision enforceable, and the rights and obligations of the parties shall be construed and enforced accordingly, preserving to the fullest permissible extent the intent and agreements of the parties herein set forth.

8) In our effort to continually improve our offerings and in response to changing technology and market conditions, CAL2CAL reserves the right to modify all or parts of the Software, or to discontinue the Software.

If you have any questions or concerns, please email us at: support@cal2cal.com.

© 2005 – 2008 CAL2CAL Corporation. All rights reserved.

2. Overview

Thank you, for your interest in our U3 USB Smart Drive based personal health record management system. **CALPHR[USB][™]** is a product for U3 USB Smart Drive that will enable the user to keep track of self and their family member's complete personal health record.

The purpose of this software / tool is to act as a complete day to day personal health information manager. This tool will even remind the user of any medications, appointments and prescription refills. Eventually this tool will also guide him / her to measure and balance the important health / body aspects.

This tool allows you to store and manage all the health related information and also provides you full mobility. It features Health, Notification, Allergy, Vision, Fitness and Pregnancy modules to store respective health related records. You can also store family address information, physician contact details, Pharmacy and Hospital information in the Demographics section. You can also locate your preferred physician, pharmacy, hospital whenever you are mobile through internet.

Health module stores the Vital signs (Heart rate, Respiratory rate, Temperature etc), Blood Pressure, Blood Sugar, Cholesterol (LDL, HDL, Triglyceride, Total Cholesterol), Exercise information in the respective sub modules. You can also store other lab test records in "Other Lab Values" sub module of Health module. This module allows you to view the records with graphical view.

Notification module stores the medications, appointments and prescription refills records. You can set alarms against the records in this module. For medication records you can set reminders against the time of taking different medicines.

Allergy module stores the allergy related (Name of the allergy, Type, Reactivity) information with respect to time.

Vision module stores the refractive power, acuity and color blindness information.

This tool also provides you to view the status of the growth of the child members, enlisted in this system with the growth chart.



Fitness module allows you to view the Calorie requirement information and BMI information of members, enlisted into this system. It also provides you the diet plan to provide the normal weight with respect to all other particulars of the selected member.

Pregnancy module stores the important health information, required at the time of pregnancy of the pregnant member with respect to the specific time span.

We are sure that you will recommend this tool to your friends and other contacts. Please visit www.cal2cal.com to check for updates and enhanced version of this tool.

3. How to use this Guide

This manual aims to provide a step by step guidance for the installation process of **CALPHR[USB]TM**.

Clicking on the chapters in the Table of Contents takes the user to the clicked section.

Print the manual and keep it as a ready reference during the installation process.

4. Installation

4.1. *Minimum System Requirements*

Operating System:

- ❖ Windows XP and above.

Device Hardware Requirements:

- ❖ 512 MB RAM (Recommended)
- ❖ U3 USB Smart Drive with Launchpad 1.4.0.2
- ❖ USB 2.0 port

Software Requirements:

- ❖ Microsoft® .NET Framework 2.0
- ❖ Microsoft® Access

4.2. *Pre-requisites / Dependencies*

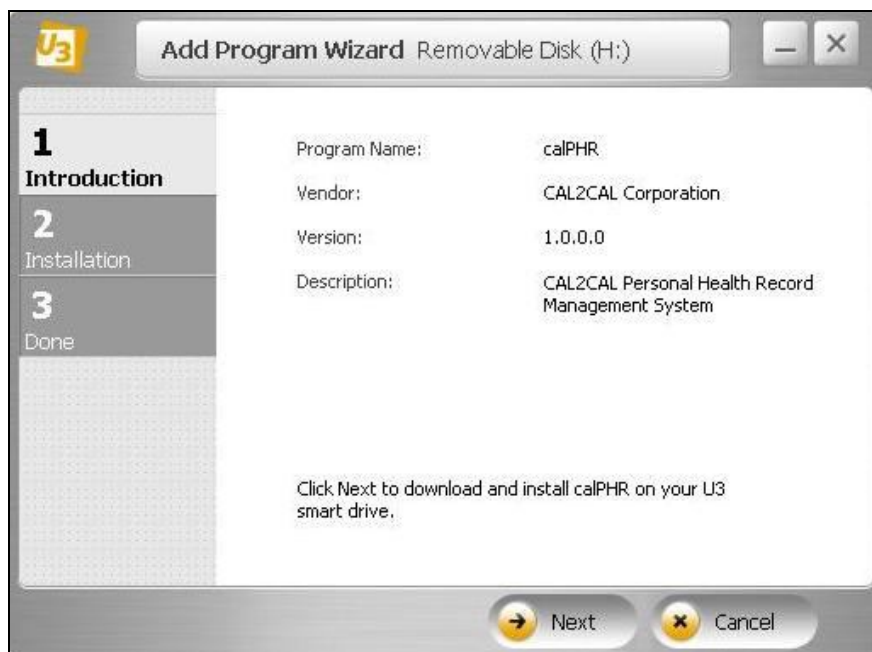
- Microsoft® .NET Framework 2.0

This component can be downloaded and independently installed through the package.

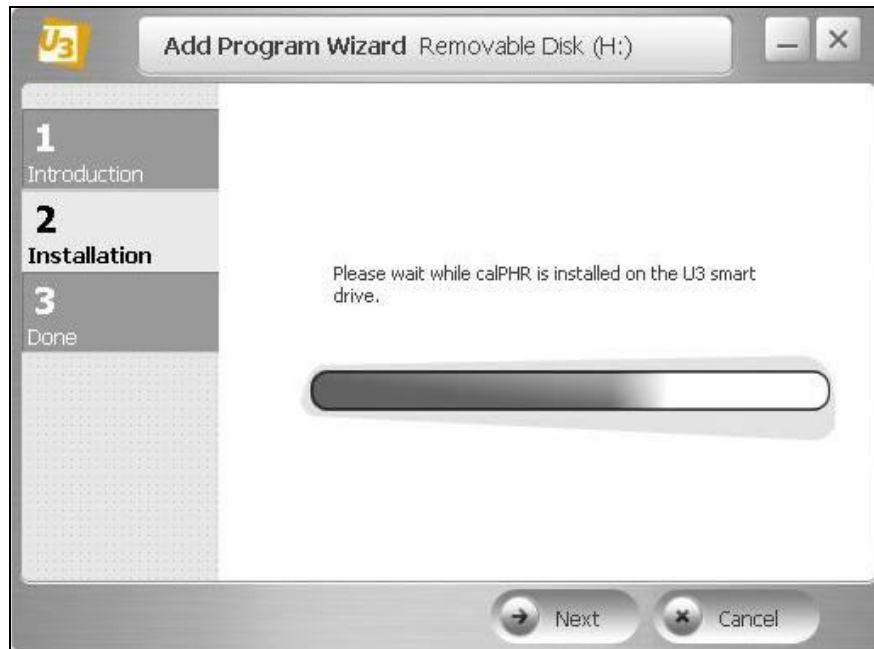
- Microsoft® Access

4.3. Installation of CALPHR[USB]TM on U3 USB Smart Drive

1. First insert your U3 USB Smart Drive into your PC.
2. Double click on the executable file (calPHR.exe) which has been provided to you.
3. Then following screens will display step by step ensuring that the application is being installed in your U3 USB Smart Drive.



4. Click on the "Next" button.



5. Click on the "Next" button.



6. Click on the "Done" button to complete the installation of **CALPHR[USB]™** on your u3 device.
7. Now you can run the **CALPHR[USB]™** application by clicking on icon shown in the screen below.



8. If Microsoft.Net Framework 2.0 is already installed in your PC, then the Application will start execution.
9. If Microsoft.Net Framework 2.0 is not installed in your PC, then a command prompt will appear with a information for installing Framework 2.0. After completion of Installation, the calPHR application will run automatically.

5. Un-Installation of calPHR[USB]™ from USB Smart Drive



To un-install this application from U3 USB Smart Drive, click on Programs Settings under Settings option of U3 Launchpad as shown in picture. Following screen will appear.



Select the calPHR from left panel and Click on Remove button.



Then a dialog box will appear and click on Yes button to remove the program from U3 USB Smart Drive

6 Support

Email us for product support: support@cal2cal.com

Contact Us:

Group Corporate Headquarters

CAL2CAL Corporation

2182 Dupont Drive, Suite 213

Irvine, CA 92612, USA

T: +1 949 955 3443

F: +1 949 955 1118

E: info@cal2cal.com

CAL2CAL (Canada) Corporation

60 Bristol Road East, Suite 727

Mississauga, Ontario L4Z 3K8, Canada

T: +1 905 593 8958

F: +1 905 593 9094

E: infocanada@cal2cal.com

CAL2CAL (India) Limited

408 Jodhpur Park

Kolkata -700068

West Bengal, India

T: +91 33 2483 4218/19

F: +91 33 2414 4812

E: infoindia@cal2cal.com

CAL2CAL Europe Ltd

CAL2CAL House

Manor Road, Abbots Leigh

BRISTOL BS8 3RP, United Kingdom

T: +44 (7971) 654040

E: europe@cal2cal.com



For further information please contact

CAL2CAL Corporation
2182 Dupont Dr. • Suite 213
Irvine, CA 92612, USA
www.cal2cal.com

© 2005-2008 CAL2CAL Corporation
All rights reserved
Unauthorized Copying and distribution
is violation of all applicable laws
Published 2002-2008