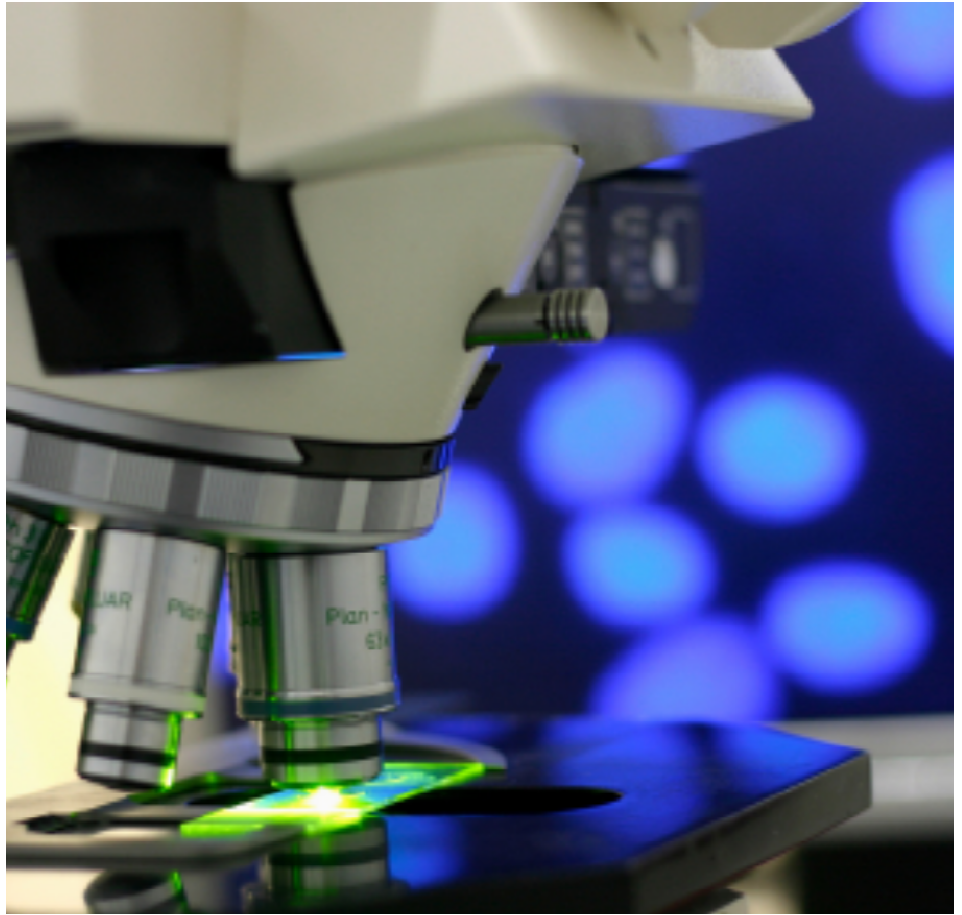


CAL2CAL Health IT



EHR Implementation and Quality Improvement

CAL2CAL helps health providers analyze and make restructuring decisions, and then works with them to help achieve interim and long-term objectives, transforming the systems and processes that underline every facet of their performance.

What do we provide?

1) Assists physicians to prepare their practices for EHR installation and implementation,

assisting in the selection of a suitable platform to implement a robust, sophisticated, user-friendly, EHR solution that:

- a) is certified by Certification Commission for Healthcare Information Technology (CCHIT) and ...
- b) incorporates all components of the "meaningful" use matrix
- c) includes laboratory interfaces, electronic claims submission, electronic prescriptions, etc.

2) Capture existing financial incentives already available such as

- a) Meaningful Use Demonstration incentive where the Providers could qualify for up to \$44,000 in Medicare incentive payments, or \$63,750 in Medical incentive payments.

- b) The Physician Quality Reporting Initiative where you can earn an incentive payment of 2% of their total allowed charges for Physician Fee Schedule (PFS) and
- c) incentive program for eligible professionals who are successful electronic prescriber's (e-Prescribers) as defined by MIPPA

3) Provide continuing support to such practices and hospitals to:

- a) ensure ongoing compliance to criteria for federal incentive payments as policies and standards are established.
- b) ensure interoperability which includes interfacing with laboratories and clinical summaries needed for continuity of care, participation in Health Information Exchanges (HIE), etc.

lorem ipsum dolor met set
quam nunc parum



2009

Nunc nobis videntur parum clari. Gothica quam nunc putamus parum claram anteposuerit litterarum formas humanitatis per seacula. Clari fiant sollemnes in futurum. Qui sequitur mutationem consuetudium lectorum Mirum est notare quam littera. Sollemnes in futurum. Decima et quinta decima Eodem modo typi qui nunc nobis videntur parum clari. Parum claram anteposuerit litterarum formas humanitatis per seacula quarta decima et? Eodem modo typi qui nunc nobis videntur parum clari fiant sollemnes in futurum. Notare quam littera gothica quam nunc putamus parum claram anteposuerit litterarum formas. Videntur parum clari fiant.

Ferhonus de plub
 Omare foremne
 Lemacord Promwn

Trenz Pruca
 Aliquam de Mantis

Urna Semper
 Chauncey de Billuptus

Cras Maecenas
 Curabitur Leo

Leo Praesen
 Mauris Vitaequam

Orci Aliquam
 Vivamus Nunc

Tortor Rasellus
 Quisque Porta

Diam Nobis
 Senmaris Calla Ipsum

Nobis Eget
 Sed accumsan Libero

Urna Sodales
 Aliquam Mattis Felis

Eget Toque
 Aliquam de Manti

Fermen Pede
 Vestibulum Bibendum

Veli Ligula
 Morbi congue Magna

Fringilla Viverr
 Seargente de Fermentum

Uam Scelerisque
 Maecenas Interdum

Odio Pede
 Eget Purus

We understand, we care... Is This Cheesy?

CAL2CAL's approach to workflow assessments is critical to the success of ensuring the best system is matched to the practice and working with the practice to ensure that current and future meaningful use measures can and will be supported. We



understand that implementing a system when the current workflow is dysfunctional will only amplify poor workflow.

CAL2CAL understands that every provider is different on how they operate, and there is no one solution that fits all of them. We believe that to really help the providers, we must understand how they operate, pay critical attention to their workflow and understand "what works" and "what does not", collect data to backup these observations, and then design a custom solution that works on the individual strengths of the providers, and minimizes any weaknesses. We take a long term interest in the success of our clients, and put our reputation on the line to make sure that the recommendations we make and the custom solutions we propose, really work, and help the providers achieve the desired goals and objectives.

Typical Engagement

1. Establishing the restructuring framework

During this phase, CAL2CAL works with clients to identify restructuring options and criteria for prioritization via a thorough understanding of internal and external factors. The internal analysis establishes the hospital's financial, strategic and operating goals. The external analysis evaluates current and future political, economic and

market environments. From here, the team sets a guiding strategy. Throughout this phase, CAL2CAL professionals facilitate decision making and communication.

2. Conducting the restructuring and redesign planning

With a guiding strategy in place, CAL2CAL provides tools to redesign and refine the financial, strategic and operational models associated with the recommended restructuring option. This phase includes the identification of possible risks or barriers to progress, and relevant solutions. The CAL2CAL team helps facilitate the required action plan and helps implement team development.

3. Executing the restructuring plan

Finally, CAL2CAL professionals provide comprehensive support throughout the restructuring implementation phase: assessing readiness and establishing timelines; preparing communication plans; providing project management office support; and establishing tracking and measurement processes.

Provider restructuring creates a transformational route away from inappropriate strategies and blocked growth paths. Teaming with a provider, CAL2CAL addresses the operation holistically to create an integrated series of solutions to help them move toward high performance. This means using the three-phase restructuring sequence to address strategies, structures and other factors that contribute to performance in each domain and to the overall performance of the enterprise.

Related Experience

CMS Prevention Initiative - 9th Scope of Work

As part of the "CMS Prevention Initiative Project - 9th Scope of Work" in partnership with the CA-QIO, CAL2CAL has worked extensively with



over 120 providers in CA on implementation of EHRs, optimizing and re-engineering workflows, process changes, and working closely with the

Physicians and the office staff to promote a standards-based care system with a focus on Prevention and the ultimate objective to improve the quality of services in the Physician offices.

Public Health Information Network - Los Angeles County

This project was funded by the Centers for Disease Control as a part of the

U.S. Government's initiative to contend with any bio-terrorism event and threats of public safety following the



2001 September 11 and Anthrax attacks. This system enables the County of Los Angeles to quickly identify, isolate and manage public health emergencies such as the spread of toxic agents, infectious diseases or natural disasters.